



505-333-2600



**505 Performance**

Home of the most powerful inline Jeep engine in the world!  
780 ft pounds of torque.

Order online from [505performance.com](http://505performance.com)

## Welcome to 505 Performance

505 Performance is a business that specializes in meeting the needs of the performance consumer. We strive to give you custom performance additions designed for your specific needs.

We specialize in supercharged-turbo motors for most applications. In addition we provide quality products for the off road and marine industry. Our products can be used for daily driving, poker runs, pleasure boating, exploring, rock crawling (mild to wild), sand drags, camping, fishing or just playing around with your friends.

Our Mission is to provide our customers with performance products and custom built motors with the addition of super chargers and turbos in mind. We also build custom shocks and suspension for the four wheeling enthusiast guaranteed to meet and exceed anybody's needs.

At 505 Performance our warranty and reputation will surpass that of the industry standard.

505 Performance has been recognized in many national magazines for unique and quality work.

We thank you for choosing 505 Performance, we are looking forward in serving you in all you off road and marine needs.

Sincerely,

Zach Steele, Owner

### **2007-2009 JK SUPERCHARGER**

2007-2009 Jeep JK 2 door or 4 door supercharger system with water to air intercooler self contained procharger unit, adjustable boost controller with turbo boy valve state of the art fmu booster pump design fuel system 125hp gain 20 miles to gal on highway four hour install. Powder coated supercharger tubes and brks.2007-2009

Price: \$4550.00

Part# 2007-2009 JK Supercharger



## Jeep Turbo Systems

PAGE 3



**This system is for 1991-1995 Jeep with a 4.0L engine.** The package includes a Custom T3 T4 Turbo, complete exhaust, Split second Electronic fuel management 2 bar map sensor, injectors (26-32lbs), all hoses and hardware, BOV, K&N Filter, boost gauge. Must be fuel injected and no after market computer chips. Accel stand alone fuel management hassle free tuning, 4 wire hook-up. \$750 add on. Intercooler also available as upgrade for \$500. 92 hp gain with turbo kit alone. With the addition of intercooler and Accel up to 150hp gain. 5-7lbs of boost. **Free shipping continental USA**

Price: \$3650.00  
Part # TURBO1



**This system is for 2000-2006 Jeep with a 4.0L engine.** The package includes a Custom T3 T4 Turbo, complete exhaust, Split second Electronic fuel management 2 bar map fuel sensor, injectors (26-32lbs), all hoses and hardware, BOV, K&N Filter, boost gauge, the intercooler is included with the 00-06 kit. Turbo will give you 92 hp and 120 lbs torque from 1700rpm to red line with 7lbs of boost.. The Accel fuel management is a stand alone system and has a 4 wire hook up. The Accel is a \$750 option . The entire system - turbo, intercooler, and Accel will give you a 150hp gain. **Free shipping continental USA**

Price:\$4150.00  
Part # Turbo3



### 1996-1999 Turbo System

**This system is for 1996-1999 Jeep with a 4.0L engine.** The package includes a Custom T3 T4 Turbo, complete exhaust, Split second Electronic fuel management 2 bar map sensor, injectors (26-32lbs), all hoses and hardware, BOV, K&N Filter, boost gauge. 92hp rear wheel and 115torque. Intercooler available as add on for \$500 and the Accel stand alone fuel management has hassle free tuning and a 4 wire hook-up for \$750. With the turbo kit, intercooler, and the Accel you can expect to see 150hp gain. **Free shipping continental USA**

Price:\$4150.00  
Part # Turbo2



### Intercooler

This is a water to air intercooler. It is designed to run off of the AC unit. The kit includes the intercooler, pump, radiator, switch and reservoir tank. Direct fit. Cool intake charge up to 150 degrees. Bolt on 30hp. Rated up to 1000hp.

Price:\$550.00  
Part# Intercooler

HYDRAULIC CAMS

Kit price includes - Push rods, springs, retainers, and timing set.



HYDRAULIC CAM  
DURATION AT 050 INTAKE 208  
DURATION AT 050 EXHAUST 212  
GROSS VALVE LIFT INTAKE .427  
GROSS VALVE LIFT EXHAUST .438  
SEPARATION 114  
Good Power, Great for towing, 4WD and off-road.  
Smooth Idle

Part # AM6 263/265-14H  
Price \$262.90  
Kit price \$398.90

HYDRAULIC CAM  
DURATION AT 050 INTAKE 211  
DURATION AT 050 EXHAUST 217  
GROSS VALVE LIFT INTAKE .480  
GROSS VALVE LIFT EXHAUST .480  
SEPARATION 114  
Good Power, Great for towing, 4WD and off-road.

Part # AM6 265/272-14H  
Price \$262.90  
Kit price \$398.90

HYDRAULIC CAM  
DURATION AT 050 INTAKE 214  
DURATION AT 050 EXHAUST 218  
GROSS VALVE LIFT INTAKE .490  
GROSS VALVE LIFT EXHAUST .483  
SEPARATION 114  
Good Power, Great for towing, 4WD and off-road.  
Smooth Idle

Part # AM6 266/272-14H  
Price \$262.90  
Kit price \$398.90

HYDRAULIC CAM  
DURATION AT 050 INTAKE 217  
DURATION AT 050 EXHAUST 223  
GROSS VALVE LIFT INTAKE .494  
GROSS VALVE LIFT EXHAUST .494  
SEPARATION 114  
Hydraulic. Good Mid to Upper Torque, needs increased compression, headers and gears.

Part # AM6 272/280-14H  
Price \$262.90  
Kit price \$398.90

HYDRAULIC CAM  
DURATION AT 050 INTAKE 225  
DURATION AT 050 EXHAUST 225  
GROSS VALVE LIFT INTAKE .480  
GROSS VALVE LIFT EXHAUST .483  
SEPARATION 114  
Good Torque and Excellent Mid-range power.  
Smooth Idle

Part # AM6 263/265-14H  
Price \$262.90  
Kit price \$398.90

Jeep cam bolt and button



Part # JEEPCAMBOLTANDBUTTON  
Price \$28.00

SOLID CAM  
DURATION AT 050 INTAKE 225  
DURATION AT 050 EXHAUST 225  
GROSS VALVE LIFT INTAKE .480  
GROSS VALVE LIFT EXHAUST .483  
SEPARATION 112  
Solid. Great Torque and Rough Idle for Hi performance... Fuel Injected. Solid lifters

Part # AM6 256/256-12F  
Price \$312.00  
Kit price \$448.00

Jeep performance cam bearings



Part# JEEPCAMBEARINGS  
Price: \$20.00

## Hydraulic Roller cams



### Biggest performance cam offered very radical

Hydraulic roller cam kit jeep 4.0/4.2/4.5/4.6/4.7/5.0 Dur230 int / 230 ex/ lift .544int / .544ex center line 114 power range 2000 to 8500 Good drive ability works with after market intake and exhaust and factory computers very strong mid range Includes timing chain 3/8 chrommolly push rods roller lifters link bars cam button and bolt. Beehive valve springs retainers and keeper included Bolt in 45 horsepower

Part# AM6 281/281-14HR  
Price \$1189.00

### Hydraulic roller cam jeep 4.0 stage 2

1991-2006 jeep 4.0 hydraulic roller cam kit complete with custom ground roller cam comp hydraulic lifters comp 4340 push rods beehive springs 4140 retainers keepers and performance single roller timing set. Duration at .50 is 216int 220 exhaust .484 lift power range 1500rpm to 5500 rpm. 28 to 46 hp gain on stock jeep motors.

Part# AM6 282/284-14HR  
Price \$1189.00

### Hydraulic roller cam 45 horsepower upgrade

Hydraulic roller cam kit jeep 4.0/4.2/4.5/4.6/4.7/5.0 Dur210 int / 216 ex/ lift .451int / .477ex center line 114 power range 1200 to 5200 Good drive ability works with after market intake and exhaust and factory computers very strong mid range Includes timing chain 3/8 chrommolly push rods roller lifters link bars cam button and bolt. Beehive valve springs retainers and keeper included Bolt in 45 horsepower

Part# AM6 267/282-14HRK  
Price \$1189.00

### Hydraulic roller cam Good midrange and top end

Hydraulic roller cam kit jeep 4.0/4.2/4.5/4.6/4.7/5.0 Dur222 int / 222 ex/ lift .506int / .506ex center line 114 power range 1600 to 6000 Good drive ability works with after market intake and exhaust and factory computers very strong mid range Includes timing chain 3/8 chrommolly push rods roller lifters link bars cam button and bolt. Beehive valve springs retainers and keeper included Bolt in 45 horsepower

Part# AM6 267/282-14HRK  
Price \$1189.00

### Hydraulic roller cam Good midrange and top end

Hydraulic roller cam kit jeep 4.0/4.2/4.5/4.6/4.7/5.0 Dur220 int / 226 ex/ lift .525int / .525ex center line 114 power range 1600 to 6000 Good drive ability works with after market intake and exhaust and factory computers very strong mid range Includes timing chain 3/8 chrommolly push rods roller lifters link bars cam button and bolt. Beehive valve springs retainers and keeper included Bolt in 45 horsepower

Part# AM6 284/292-14HR  
Price \$1189.00



### Jeep 4.0 stage 1 roller cam plus lifters

1991-2006 jeep 4.0 hydraulic roller cam lifters complete with custom ground roller cam comp hydraulic lifters comp. Duration at .50 is 207int 216 exhaust .484 lift ground on a 114 power range 1200rpm to 5400 rpm. 28 to 46 hp gain on stock jeep motors. Cam hydraulic roller cam jeep motor camshaft performance

Part# AM6 284/292-14HR  
Price \$1189.00



**Stroker Kit 4.7**

HP Forged Stroker kit for a 4.7 AMC. Kit comes with Prorock rods, Ross Racing pistons, Total Seal, Clevlite Rods & Mains. Kit includes custom blueprinted crankshaft. The kit is balanced and the compression is 8.5:1 to 10.5:1. Please specify compression when ordering. Please allow 3 weeks for custom pistons to be made. Price does not include freight.



Price \$2050.00  
Item #: Jeep 4.7 Stroker

**Stroker Kit 5.0**

Forged Stroker kit for a 5.0 AMC. Kit comes with Prorock rods, Ross Racing pistons, Total Seal, Clevlite Rods & Mains. Kit includes custom blueprinted crankshaft. The kit is balanced and the compression is 8.5:1 to 10.5:1. Please specify compression when ordering. Please allow 3 weeks for custom pistons to be made. Price does not include freight.



Price \$2250.00  
Item #: Jeep 5.0 Stroker

**Pro Rock STroker kit economy 60hp gain**

Pro rock Jeep stroker kit economy kit complete with forged KB pistons 9.1 compression 258 blue printed crank shaft factory 4.0 blue printed rods complete with arp bolts. Get up to 60 hp gain. Everthing Balanced total seal rings performance bearings, ships within 3 days.

Upgrade to new crankshaft for \$300.00

Price \$1189.00  
Item #: 505prstk

**Jeep valve exhaust  
Standard duty Is 1.550**

**Jeep valve intake  
Standard duty Is 2.000**

Part# Jeep standardintake  
Part# Jeep standardexhaust

Price \$7.50.00



**Hi performance stainless valve intake**

Hi performance stainless valve intake 2 inch for supercharged / turbocharged engines

Part# HIPERFORMANCESTINTAKE  
Price \$19.99 each



**Hi performance stainless valve exhaust**

Hi performance stainless valve exhaust 1.550 inch

Part# HIPERFORMANCESTEX  
Price \$19.99 each



**Jeep oil pump blue printed hi volume low pressure**

Part# JEEPOILPUMPbp  
Price \$75.00 each



**Jeep oil pump oem**

Part# JEEPOILPUMPoem  
Price \$56.00 each

To Order Call: 1 505-333-2600

PAGE 8

## Wheel Spacers



### Wheel spacers 5X4.5X1.25

505 Performance Wheel Spacers. \$69.00 each. Set of five \$245.00.

*Item #:* Wheel spacers 5X4.5X1.25

### Wheel spacers 5X4.5X1.50

505 Performance Wheel Spacers. \$69.00 each. Set of five \$245.00.

*Item #:* Wheel spacers 5X4.5X1.50

### Wheel spacers 5X4.5X2.00

505 Performance Wheel Spacers. \$69.00 each. Set of five \$245.00.

*Item #:* Wheel spacers 5X4.5X2.00

### Wheel spacers 5X5.5X1.50

*Item #:* Wheel spacers 5X5.5X1.50

### Wheel spacers 5X5.5X1.00

505 Performance Wheel Spacers. \$69.00 each. Set of five \$245.00.

*Item #:* Wheel spacers 5X5.5X1.00

### Wheel spacers 5X5.5X1.25

*Item #:* Wheel spacers 5X5.5X1.25

### Wheel spacers 5X5.5X1.50

505 Performance Wheel Spacers. \$69.00 each. Set of five \$245.00.

*Item #:* Wheel spacers 5X5.5X1.50

### Wheel spacers 5X5.5X1.75

*Item #:* Wheel spacers 5X5.5X1.75





Order Form Title

Item #	Description	Qty.	Price	Subtotal

Order total: \_\_\_\_\_  
Tax: \_\_\_\_\_  
Shipping: \_\_\_\_\_  
Total: \_\_\_\_\_

Name \_\_\_\_\_

Address \_\_\_\_\_  
\_\_\_\_\_  
\_\_\_\_\_

Phone \_\_\_\_\_

Method of Payment

- Check
- Bill Me
- Visa
- MasterCard
- American Express

Credit Card # \_\_\_\_\_ Exp. date \_\_\_\_\_

Signature \_\_\_\_\_

New 2010 Jeep 5140 Stroker Crankshaft



Jeep Rods HBEAM 5.0 replacement rods rated at 800hp  
Includes bearings  
Price \$567.00  
Item #: Jeep Rods HBEAM 5.0



Std rod std main journal stroke 3.895. Rated at 800hp all new 5140 high-grade steel. .090 Radius micro polished and Zero balanced. Will fit all 4.0 and 258 Blocks call for pricing available March

ProRock IBEAM rods  
Pro Rock stock replacement jeep 4.0 and all Jeep stroker engines with KB pistons or stock pistons I beam rods 4340 cap screws rated 500hp... Stock journal Size p bearing p pin. Rod length 6.125  
Price \$279.00

Price: \$799.00 each  
Item# Jeep 4340 Stroker Crankshaft



Jeep Rods 6.150 hbeam 4340  
Standard Journal .912 pin 4340 Pro Rock H Beam rods 4.0, 4.2, 4.5, 4.6 or 4.7 shipping \$12.00 Continental US. Featured in JP Magazine November issue.  
Price: \$399.00 set of six  
Item# Item #: Y6150

ProRock stock rods  
Pro Rock stock replacement jeep 4.0 and all Jeep stroker engines with KB pistons or stock pistons I beam rods 4340 arp bolts shot pen and balanced rated 400hp... Stock journal Size p bearing p pin. Rod length 6.123  
Price \$229.00



505 Performance Roller Rockers provide the best resistance to bending and breakage under high spring pressures at high RPM. Pressed steel rocker arms are simply prone to failure with a high rate of fulcrum wear, flexing, cracking, splitting and breakage resulting in power loss and possible piston failure.

Non Adjustable  
Price: \$380.00  
Item# prsrockers1.6na

Adjustable  
Price \$420.00  
Item #: prsrockers1.6a

**Jeep Header 1991-1999**

Exhaust header for 1991-99 6cyl 4.0 for XJ, TJ, YJ, ZJ. It comes with the gasket. Stainless only!

Price: \$219.00  
Item# Header



**STAINLESS FULLY PORTED HEADERS 2001-2006 INLINE 6**

Price: \$399.00 each  
Item# HEADERS2001 2006 ST

**STAINLESS FULLY PORTED HEADERS 91-2000 INLINE 6**



Price: \$365.00  
Item# STAINLESS HEADER 91-2000

**Jeep 4.0 stage 1 roller cam plus lifters**  
1991-2006 jeep 4.0 hydraulic roller cam lifters complete with custom ground roller cam comp hydraulic lifters comp. Duration at .50 is 207int 216 exhaust .484 lift ground on a 114 power range 1200rpm to 5400 rpm. 28 to 46 hp gain on stock jeep engines. Cam hydraulic roller cam jeep engine

Price: \$1198.00  
Item# AM6 268/276-14H



The long block includes Ross Racing pistons at any compression ratio, Seal Power gapless rings, Eagle 3D rods, Blueprinted stock crank, blueprinted stage 1 head, pocket porting, new valves and springs, main girdle, brass freeze plugs and cam bearings. Upgrades Available. Please call for prices!

Price: \$3499.00  
Item# 4.0 longblock



**Pro Rock STroker kit economy 60hp gain**  
complete with forged KB pistons 9.1 compression 258 blue printed crank shaft factory 4.0 blue printed rods complete with arp bolts. Get up to 60 hp gain. Everthing Balanced total seal rings performance bearings, ships within 3 days. please specify bore size.

Price: \$1189.00  
Item# 505prsk1  
Upgrade to new crankshaft for \$300.00

**Short Block**

The short block includes Ross Racing Pistons at any compression ratio, Seal Power gapless rings, Eagle 3D rods, blueprinted stock crank, main girdle, brass freeze plugs and cam bearings. Upgrades Available. Please call for prices! Specify specific gear.

Price: \$2450.00  
Item# 4.0 4.7  
Shortblock

**Stroker Kit 5.0**

HP Forged Stroker kit for a 5.0 AMC. Kit comes with Prorock rods, Ross Racing pistons, Total Seal, Clevlite Rods & Mains. Kit includes custom blueprinted crankshaft. The kit is balanced and the compression is 8.5:1 to 10.5:1. Please specify compression when ordering. Please allow 3 weeks for custom pistons to be made. Price does not include freight.

Price: \$2250.00  
Item# 5055.0stk



**Superchips 3875 Flashpaq for Jeep**

Now you can increase the horsepower and overall performance of your vehicle with no tools and without even getting dirty. All you need to do is plug Superchips' new Flashpaq into your vehicle's diagnostic port, answer a few simple questions and go through a few easy steps. Once you're done, unplug it and take a test drive. It's that easy. Flashpaq monitors all of your engine and transmission parameters, gives you more tuning options and multiple performance enhancing calibrations, and it even downloads and stores the factory calibration should you ever want to return your vehicle to stock. You can also download the latest updates Flashpaq into your PC.

**STAINLESS  
HEADER 91-2000**

Price: \$399.00  
Item #: Superchips3875 0



**Stock replacement rod bolts**

Price: \$54.00  
Item #: ARP ROD BOLTS

Jeep 242/258 mopar mls head gasket and intake gasket.

Three layer stainless steel head gasket and garlock material rated at 2000 degress and dyno over 800hp.  
Kit price \$76.00  
Head gasket \$72.00  
Int/ex gasket \$20.00



Springs keepers retainers for Jeep  
Beehive 4340 retainers and keepers.  
Rated at .550 lift.

Price: \$140.00  
Item #: SPRINGSKEEPERSRETAINERS



**Jeep cam bolt and button**

Part # 4.0JCB  
Price \$28.00  
Adjusted Price \$28.00

4340 push rods standard  
replacement set of 12  
\$48.00

Timing set heavy duty 1/2 inch single  
roller. Tested 6500 rpm.  
Part#3103  
Price \$48.00

Timing chain guide Jeep 4.0 / 258  
Price \$7.00



**1991-2006 Jeep Throttle body 62, 66, 68, and 70 mm**

Constructed from 6061 T6 Aluminum -Improved blade and bearing design -  
Largest possible bore size -Red Anodized Finish -Takes less than 30 minutes to  
install -Increased Air-Flow can free up to 15 Horsepower in stock engines -A  
High Flow Air Filter is recommended for a maximum benfit -Fits 91-04 Jeeps  
with the 4.0L HO engine. -

Price: \$386.00  
Item #: 62mm Jeep Throttle Body

## Pistons



Keith Black ic944-030 Forged dish 3.935 in. Bore, 5/64in, 5/64 in. 3/16in ring, jeep inline 6, set of 6. includes rings.

Price:\$558.00  
Item# Keith Black ic944-030

Ross Racing Pistons 5.0  
Bore - 3.906, 3.935. Ring Grooves - 1/16, 1/16, 3/16. These are a great set of pistons. .Specify compression ratio when ordering Set comes complete with rings. Must use 5.0 Liter Rods from 505performance. Rated at 800hp dyno proven.

Price:\$794.00  
Item# ROSSRACING5.0

Keith Black ic945-030  
Forged dish 3.935 in. Bore, 5/64in, 5/64 in. 3/16in ring, jeep inline 6, set of 6. includes rings.

Price:\$558.00  
Item# Keith Black ic945-030

Ross Racing Pistons 2.5L  
Ross Racing Pistons for a Jeep/AMC 2.5. Bore - 3.906, 3.935. Ring Grooves - 1/16, 1/16, 3/16. These are a great set of pistons. Set comes complete with rings. Use stock rods and ends must be floated. .927 pin. Specify compression ratio when ordering . Most special order pistons **three week**

Price:\$589.00  
Item# ROSS Pistons 2.5L

Keith Black ic944-060  
Forged dish 3.935 in. Bore, 5/64in, 5/64 in. 3/16in ring, jeep inline 6, set of 6. includes rings.

Price:\$558.00  
Item# Keith Black ic944-060

Ross Racing Pistons 4.5 4.6 4.7  
For a Jeep/AMC 4.7. Bore - 3.906,3.935 . Ring Grooves - 1/16, 1/16, 3/16. These are a great set of pistons. Specify compression ratio when ordering Set comes complete with rings. Must use pro rods .912 pin. Most special order pistons **three week delivery time**

Price:\$724.00  
Item# ROSS Pistons 2.5L

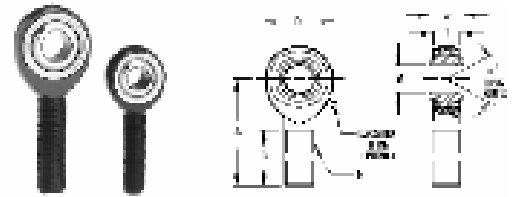
Keith Black ic945-060  
Forged dish 3.935 in. Bore, 5/64in, 5/64 in. 3/16in ring, jeep inline 6, set of 6. includes rings.

Price:\$558.00  
Item# Keith Black ic945-060

Ross Racing Pistons 4.0  
For a Jeep/AMC 4.0. Bore - 3.906, 3.935. Ring Grooves - 1/16, 1/16, 3/16. These are a great set of pistons. Specify compression ratio when ordering . Set comes complete with rings. Must use Eagle rods .912 pin  
Most special order pistons **three week delivery time**

Price:\$724.00  
Item# ROSS Pistons 2.5L

### Rod Ends



**Rod End Male Aluminum Series #10**  
3-Piece, male aluminum series.  
Bolt size .6250 ( 5/8) Shank 5/8-18  
Please specify right or left.



Price \$17.69

Item# ALJML10H

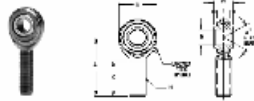
**Rod End Male Aluminum Series #12**  
3-Piece, male aluminum series. Bolt size .7500 (3/4)  
Shank 3/4-16. Please specify right or left.



Price \$20.10

Item# ALJML12H

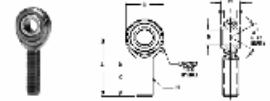
**Rod End Male CMX Series #10**  
2 Piece, metal to metal, heat  
treated, alloy steel/PTFE liners  
available. Bolt size .6250 (5/8)  
shank 3/4-16. Please specify left or right.



Price \$16.89

Item# CMXL12-10

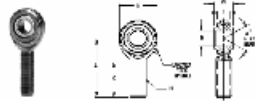
**Rod End Male CMX Series #12**  
2 Piece, metal to metal, heat  
treated, alloy steel/PTFE liners  
available. Bolt size .7500 (1/2)  
shank 3/4-16. Please specify right or left.



Price \$16.50

Item# CMXL12

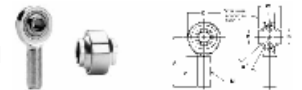
**Rod End Male CMX Series #8**  
2 Piece, metal to metal, heat  
treated, alloy steel/PTFE liners  
available. Bolt size .5000 (1/2)  
and shank 3/4-16. Please specify right or left



Price \$16.89

Item# CMXL12-8

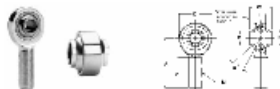
**Rod End Male Heavy Duty #10**  
High misalignment series, male rod  
end and spherical veering -  
HEAVY DUTY!! Bolt size .6250 (5/8) Shank 3/4-16. Please  
specify left or right.



Price \$45.50

Item# HRSMXL10T

**Rod End Male Heavy Duty #12**  
High misalignment series, male  
rod ends and spherical bearings -  
HEAVY DUTY!! Bolt size .7500  
(3/4) Shank 7/8-14. Be sure to specify left or right thread!!



Price \$56.50

Item# HRSMXL12T

**Rod End Male Heavy Duty #8**  
High misalignment series, male rod  
ends and spherical bearings -  
HEAVY DUTY!! Bolt size .5000  
(1/2) Shank 5/8-18. Please specify right or left.



Price \$35.25

Item# HRSMXL8T

New for 2010



New 2010 Jeep 4340 Stroker Crankshaft

Specs Std rod std main journal stroke 3.895.  
Rated at 800hp all new 4340 high-grade steel.  
.090 Radius micro polished and Zero balanced. Will fit all 4.0 and 258 Blocks

call for pricing available March

---

New 2010 Jeep 5.0 Stroker Crankshaft

Specs must use matched 5.0 rods  
stroke is 4.060 rated a 900hp  
.125 Radius  
Must use aftermarket rods...

Call for price available March...

# 505 Performance

Phone: 505-333-2600  
Fax: 505-334-2696  
E-mail: sales@505performance.com

## 505 PERFORMANCE

80 cr3535  
Flora Vista, NM  
87401

